

Rack Mount LCD Monitor

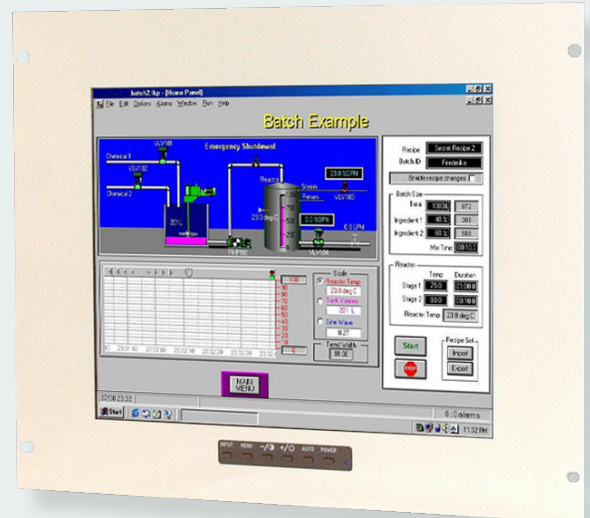
KME has developed a comprehensive range of Rack mountable LCD Monitors for Industrial applications. Our philosophy is quite simple – we use LCD monitor Heads (29LM series) from our existing flat-panel industrial monitor range and integrate them with metal panels to industry-standard dimensions.

Rack Mount Monitors have a full range of controls at the front and standard spaced holes for 19" rack mounting. As a general rule Rack mounted monitors are normally supplied finished in RAL 7035. We know that there will be occasions when this standard range is not exactly suited to all customer requirements – and we remain willing to customise colours or dimensions to market demands.

Features

- Standard 19" Equipment Rack Dimensions
- Painted in RAL 7035 (other colours available)
- Adjustment Controls at the front
- High grade Chrome handles available as option
- Toughened Non-Glare Safety Glass

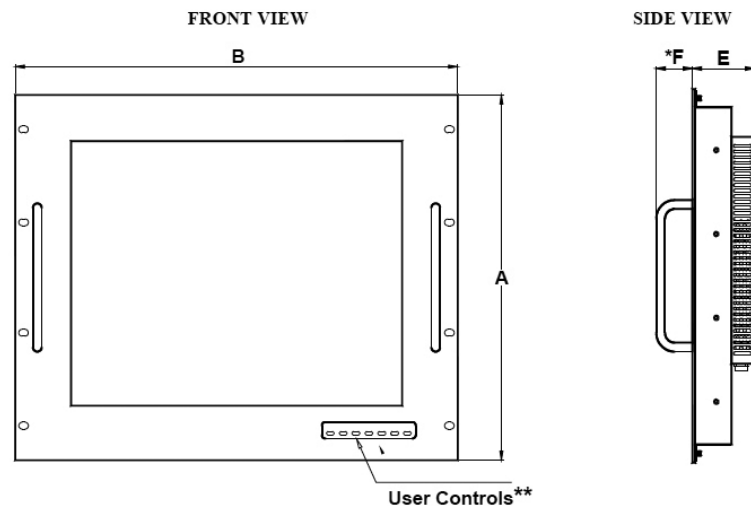
19" LCD Rack Mount Monitor
29LR1901A51UN-3



Specifications: see next page

Specifications		
TFT Characteristics	Type Max. Resolution Active Display Area Contrast Ratio Brightness Viewing angles (at CR>10) Backlight life Nr. of colours Clock Rate	AM Colour TFT 1280 x 1024 pixels 376 x 301 mm 1000:1 typical 250 cd/m ² typical 178°H, 178°V 50,000 hrs typical 16M 112MHz max
Sync. Type/Level	Separate H&V (+/-ve) TTL	or Composite (-ve) TTL or Sync-on-Green (-ve) 0.3V
Signal Sync	Analog RGB 0.7-1.0Vp-p or TTL RGB >2.75Vp-p	
Synchronisation Range	Horizontal scan Vertical scan	15 to 80kHz 40 to 100Hz
Power supply	90 - 260VAC 50/60Hz	
Power consumption	50W (Max)	
Environmental	Storage temp. Operating temp.	-20°C to 60°C 0°C to 50°C
Dimensions	Monitor	see table below
	Weight	9 kg approx
Input	15D BNC x5, 9D	
Housing	Painted aluminium	
User controls	Front mounted	
On screen buttons	Brightness, Contrast, Auto set-up Disable, H/V Position, Clock, Clock Phase and Priority	
Part numbers		
Model	29LR1901A51UN/3	

Specifications are subject to change without notice.



Design Notes:

1. Rack Colour is normally RAL 7035.
2. Rack Metal Thickness is 3mm

* Handles fitted by request – not standard

** Controls on certain monitors are in the centre
(Controls at the rear on 12" monitors)

(Not to Scale)

Dimensions (mm)	RACK MOUNT			
	12.1"	15.0"	17.0"	19.0"
A	266 (6U)	355 (8U)	399 (9U)	399 (9U)
B	483	483	483	483
E	58	63	N/A	69
F	40	40	N/A	40

• Monitors

Desktop Monitors
Large screen Monitors
Custom-made Monitors
19" Rack Mount Monitors
Rear Mount Monitors
Monitors for Panel Mount
Monitors for VESA Mount
Kiosks
Accessories

• Monitors – Specific applications

Stainless Steel Monitors
Car Displays
Marine Monitors
Military Monitors
Replacement Monitors
Train Monitors

• Panel PC's

High Performance Systems
Custom made Panel PC's
Low Power Systems
Extreme environments

• Pointing devices

Accessories
Touchpads
Trackballs
Trackball Modules
Joysticks
Custom made Pointing Devices

• Keyboards

Desktop Keyboards with or without pointer
Built-in Keyboards with or without pointer
Cables & Connectors
Custom made Keyboards



Mulder-Hardenberg, est. 1927, is the answer to professional demands in the domain of electronic related environments. We don't just sell products. We use our multidiscipline knowledge to provide the best possible solution, designed to your specific interest.

Contact details:

The Netherlands
Mulder-Hardenberg B.V.
Westerhoutpark 1a
2012 JL Haarlem
Tel.: +31 23 531 91 84
info@mh-h.biz

Belgium, France, Luxemburg
Mulder-Hardenberg N.V.
Hoge Weg 129
B-2940 Stabroek
Belgium
Tel.: +32 3 660 13 20
info@mh-h.biz

Germany
Mulder-Hardenberg GmbH
Nordring 13
D-65719 Hofheim/Ts
Tel.: +49 6192 - 97 91 85
info@mh-h.biz